

# GTI Color Harmony Inspection System

For Exterior Coatings and Accessories



In the automotive industry, paints and coatings are becoming more complex, parts are being manufactured from a wider range of materials, effect pigments are being used more frequently, and final products consist of components from a worldwide supply chain. To ensure quality, incoming parts and final products need to be inspected in a lighting environment that is compliant with industry standards. The GTI Color Harmony Inspection System (CHIS) is designed to help manufacturing and color quality professionals meet this challenge, to better manage color, and to ensure their products meet their brand's promise.

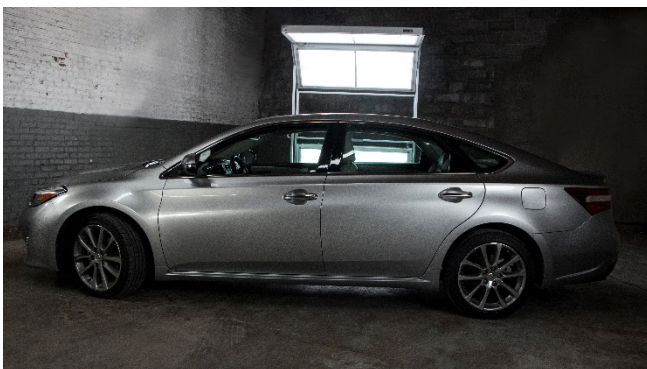
## Optimized Visual Inspection

The GTI CHIS has been developed for critical color and appearance audits in the automotive industry. Features include three independently controlled luminaires with three light levels, multiple angles of illumination, a wireless remote, GTI ColorGuard II lamp tracking, and casters to easily position the viewing system.

GTI's CHIS meets the ASTM D1729 and SAE J361 standards for color viewing. Enabled by GTI's 6500K ColorMatcher lamps, the CHIS has a CIE rating of B/C based on ISO/CIE 23603:2005 (previously designated as CIE Publication 51), one of the highest in the industry. These lamps not only include energy in the visible spectrum, but also in the near UV area of the spectrum to provide a far more accurate simulation of true daylight to observe the effects of optical brighteners, whitening agents, fluorescent dyes, and pigments.

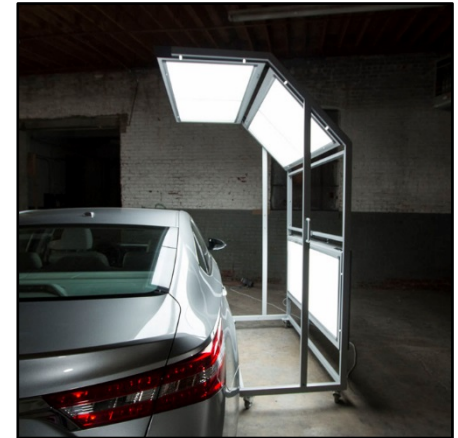
## Why GTI

GTI is a leading manufacturer of lighting systems. An in-house spectroradiometric laboratory and a 100% measurement and verification production process guarantees that precision and accuracy is built into all products. All products are shipped with a certificate of product conformance (NIST traceable).



## Specifications

Model	Dimensions (H x W x D)	Watts
CHIS-40	100" x 42" x 44" (254 cm x 107 cm x 112 cm)	788
CHIS-52	100" x 54" x 44" (254 cm x 137 cm x 112 cm)	1008
CHIS-64	100" x 66" x 44" (254 cm x 168 cm x 112 cm)	1260



*The GTI Color Harmony Inspection System's multiple angles of illumination will help you to match colors and detect surface imperfections in fit and finish.*



*GTI lamps are manufactured with proprietary fluorescent phosphors that are unequalled by any other lamp in the industry. They produce a true full spectrum white light which renders colors with the highest degree of accuracy, color rendering, and efficiency.*

### Standard Features:

- Meets viewing requirements for SAE J361 and ASTM D1729
- Superior quality, full spectrum D65 daylight
- Multiple angles of illumination
- Three independently controlled luminaires with three light levels
- Wireless remote control
- Easily rolls into position
- GTI ColorGuard II tracks lamp usage
- Multiple light sources available

05-11-2017